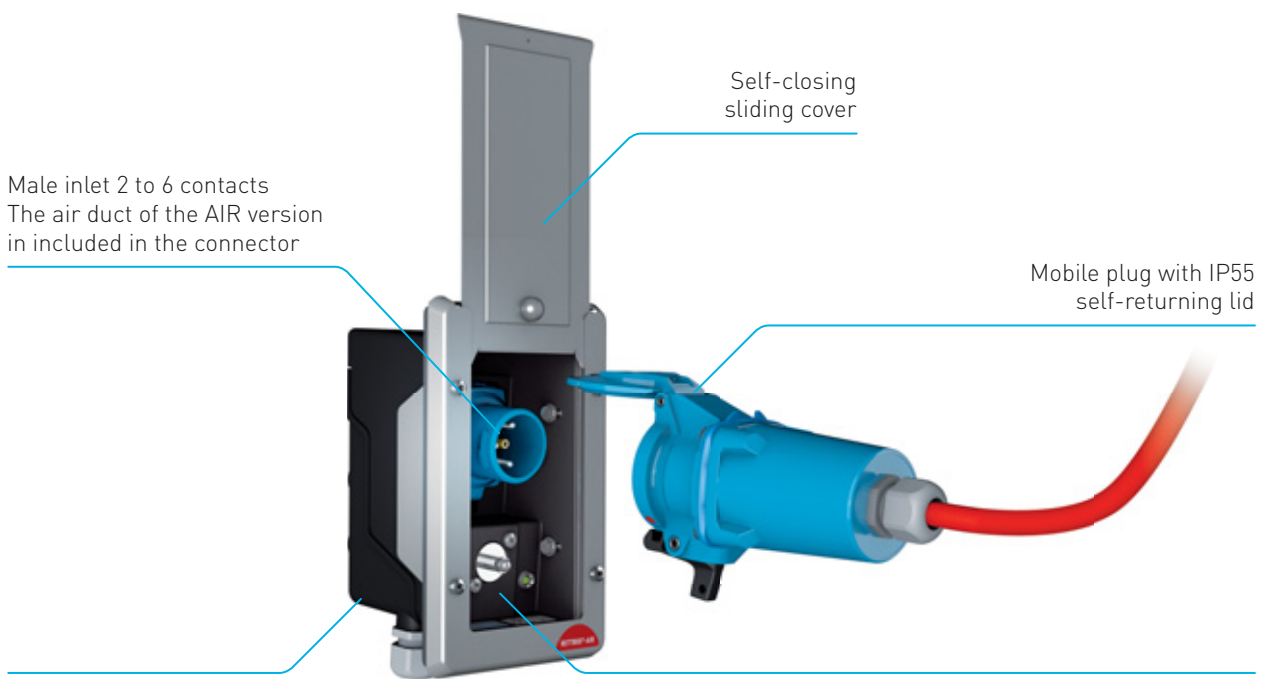


20 A/32 A

# RETTBOX® ONE SERIES ELECTROMAGNETIC SELF-EJECTION

## RETTBOX® ONE



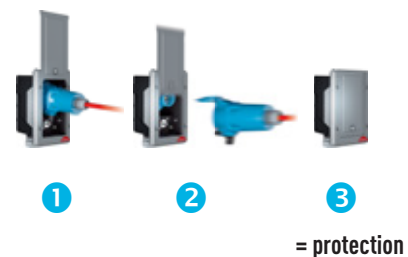
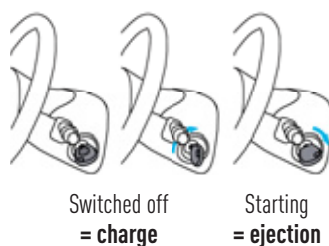
RETTBOX® ONE 20 A: casing in GRP  
RETTBOX® ONE 32 A: stainless steel AISI316L

Electric solenoid 12/24 V providing automatic ejection when the engine is started

## INFOS +

### ENSURE SPEED AND SAFETY

- 1 Loading box connected to the electrical system of the vehicle.
- 2 Automatic ejection of the coupler socket upon start-up of the vehicle by way of an electric solenoid.
- 3 Protection against water and dust by means of a self-closing cover.

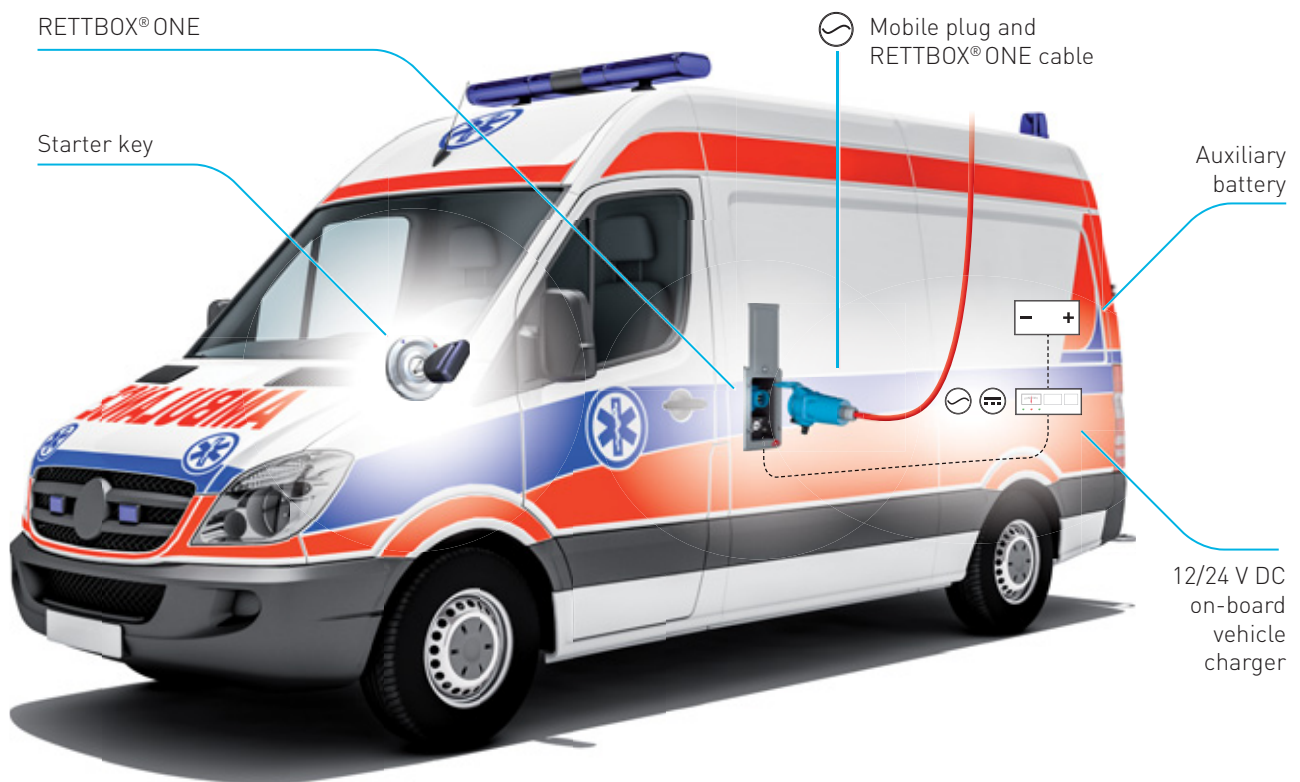


RETTBOX® ONE complies with the following standards:

- European Low Voltage Directive and RoHS, European REACH Regulation.
- IEC/EN 60309-1 and IEC/EN 60670.

## CONNECTION DIAGRAM BY TYPE

Power supply with 230 V AC or 400 V AC on-board battery charger.



FIND ALL THE INFORMATION ABOUT THE  
RETTBOX® ONE ON OUR YOUTUBE CHANNEL



# 20A

440 V  
U MAXI

## RETTBOX® ONE ELECTROMAGNETIC SELF-EJECTION



IP55



1,5 - 6 mm<sup>2</sup> (1)



GRP  
STAINLESS  
STEEL



IK08  
IK10



- 40 °C  
+ 60 °C



3 AUX.

(1) Flexible wiring (min.-max.)



**ENCLOSURE WITH INLET**  
pre-wired, cable 4 m  
supplied with 4 m cable (2)



**COUPLER SOCKET**  
pre-wired, cable 4 m  
included (2)

### RETTBOX® ONE (20A)

220 - 250 V AC	1P+N+E	With 12 V relay and male inlet	6116015RK412U	6113015RK4L
220 - 250 V AC	1P+N+E	With 24 V relay and male inlet	6116015RK424U	6113015RK4L
220 - 250 V AC	1P+N+E+2 aux.	With 12 V relay and male inlet	6116175RK412U	6113175RK4L
220 - 250 V AC	1P+N+E+2 aux.	With 24 V relay and male inlet	6116175RK424U	6113175RK4L
24 V DC	2P DC*	With 24 V relay and male inlet	6116089RK424U	6113089RK4L
12 V DC	2P DC*	With 12 V relay and male inlet	6116059RK412U	6113059RK4L

\*LED not available for these configurations.

(2) All versions are available in 4, 8 and 12 m, contact us for the references.

OTHER FEATURES

	RETTBOX® ONE (20A)
Front	stainless steel
Box	GRP
Front dimensions (W x H) in mm	114 X 184
Cut-out dimensions on vehicle's frame (W x H x D) in mm	83 X 163 x 94
Auxiliary contacts in option	2 Aux
Weight (excluding coupler socket)	1 200 g
Built-in DECONTACTOR™	20A

DOWNLOAD THE RETTBOX® ONE USER MANUAL FROM OUR WEBSITE MARECHAL.COM



INFOS +

LED CONTROL LIGHT

RETTBOX® ONE (20 A, 230 V) feature a LED signal light that indicates the presence of charging voltage.



OPTIONS

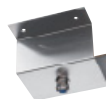
Reference

LEATHER PULL-GRIP (COUPLER SOCKET)



611AZIE

CEILING BRACKET MADE OF STAINLESS STEEL

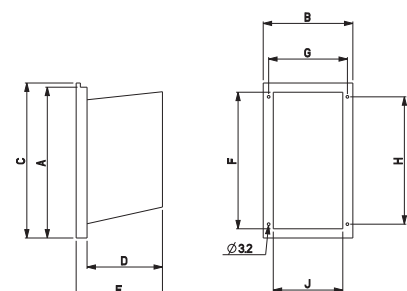


RETTBOX® ONE 20A

611AHUTRRR L

DRAWINGS AND DIMENSIONS

	A	B	C	D	E	F	G	H	J
RETTBOX® ONE 20 A	184	114	184	89	114	163	94	152	83



# 20A/32A

440 V  
U MAXI

## RETTBOX® ONE AIR ELECTROMAGNETIC SELF-EJECTION



IP55



1,5 - 6 mm<sup>2</sup> (1)



GRP  
STAINLESS  
STEEL



IK08  
IK10



- 40 °C  
+ 60 °C



3 AUX.

(1) Flexible wiring (min.-max.)



**ENCLOSURE WITH INLET**  
supplied with 4 m cable -  
compressed air conduct up to 13 bars<sup>(2)</sup>

**COUPLER SOCKET**  
pre-wired, cable 4 m  
included <sup>(2)</sup>

### RETTBOX® ONE AIR (20A)

220 - 250 V AC	1P+N+E	With 12 V relay and male inlet	6116015AK412U	6113015AK4L
220 - 250 V AC	1P+N+E	With 24 V relay and male inlet	6116015AK424U	6113015AK4L
220 - 250 V AC	1P+N+E+1 aux.	With 12 V relay and male inlet	6116215AK412U	6113215AK4L
220 - 250 V AC	1P+N+E+1 aux.	With 24 V relay and male inlet	6116215AK424U	6113215AK4L
24 V DC	2P DC*	With 24 V relay and male inlet	6116089AK424U	6113089AK4L
12 V DC	2P DC*	With 12 V relay and male inlet	6116059AK412U	6113059AK4L
Cable only (per metre): 611AKOM				

\*LED not available for these configurations.

(2) All versions are available in 4, 8 and 12 m, contact us for the references.



**ENCLOSURE WITH INLET**  
supplied with 4 m cable -  
compressed air conduct up to 13 bars<sup>(2)</sup>

**COUPLER SOCKET**  
pre-wired, cable 4 m  
included <sup>(2)</sup>

### RETTBOX® ONE AIR (32A)

200 - 250 V AC	1P+N+E+3 aux.	With 24 V relay and male inlet	3816187AK424U	3813187AK4L
380 - 440 V AC	3P+N+E+1 aux.	With 24 V relay and male inlet	3816247AK424U	3813247AK4L
Cable only (per metre): 381AKOM				

(2) All versions are available in 4, 8 and 12 m, contact us for the references.

## OTHER FEATURES

	RETTBOX® ONE AIR (20A)	RETTBOX® ONE AIR (32A)
Front	stainless steel	stainless steel
Box	GRP	stainless steel
Front dimensions (W x H) in mm	114 X 184	132 X 188
Cut-out dimensions on vehicle's frame (W x H x D) in mm	83 X 163 x 94	103 X 173 x 145
Auxiliary contacts in option	1 Aux	3 Aux
Weight (excluding coupler socket)	1 200 G	3 200 G
Built-in DECONTACTOR™	20A	32A
Compressed air duct	up to 13 bars	up to 13 bars

DOWNLOAD THE RETTBOX® USER MANUAL FROM OUR WEBSITE [MARECHAL.COM](http://MARECHAL.COM)



## INFOS +

### LED CONTROL LIGHT

RETTBOX® ONE AIR (20 A, 230 V) feature a LED signal light that indicates the voltage presence.



## OPTIONS

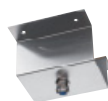
## Reference

### LEATHER PULL-GRIP (COUPLER SOCKET)



611AZIE

### CEILING BRACKET MADE OF STAINLESS STEEL



RETTBOX® ONE AIR 20A

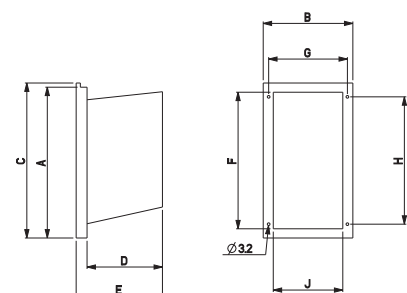
611AHUTAAA L

RETTBOX® ONE AIR 32A

381AHUTAAA L

## DRAWINGS AND DIMENSIONS

	A	B	C	D	E	F	G	H	J
<b>RETTBOX® ONE AIR 20 A</b>	184	114	184	89	114	163	94	152	83
<b>RETTBOX® ONE AIR 32 A</b>	188	132	197	140	151	173	116	169	103



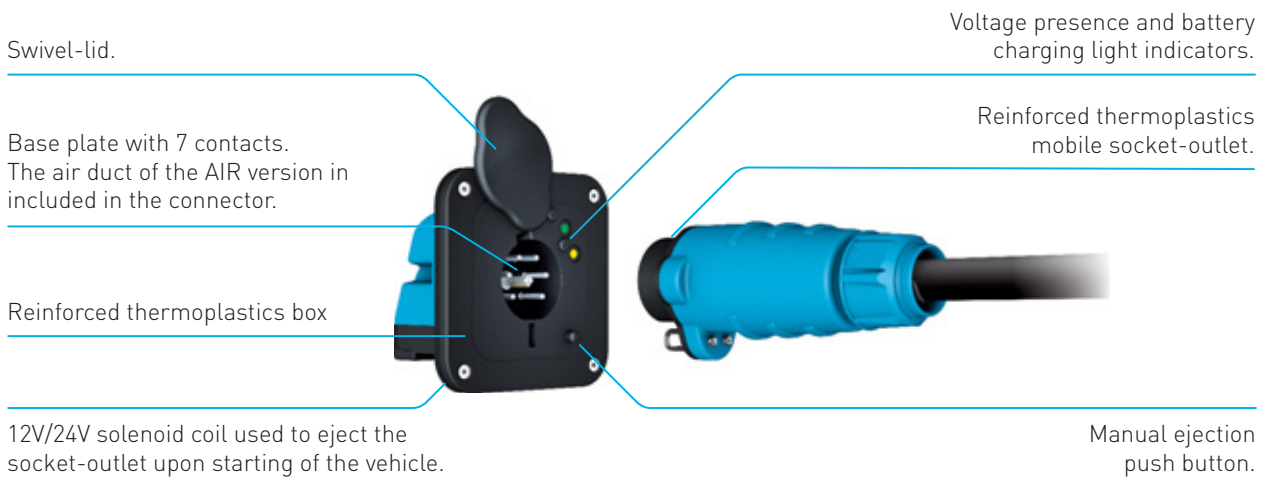
20 A/32 A

# RETTBOX® S SERIES

## ELECTROMAGNETIC SELF-EJECTION

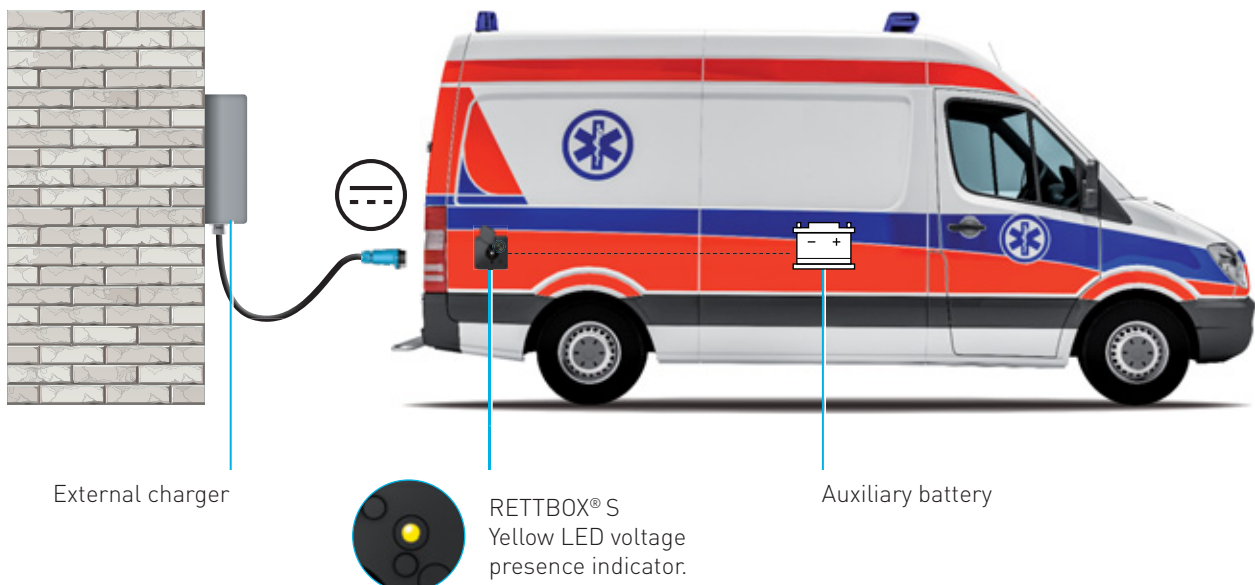
WITH OR WITHOUT AIR

### RETTBOX® S



### VOLTAGE PRESENCE AND AUXILIARY BATTERY CHARGING LIGHT INDICATORS

Figure 1: with an external battery charger.  
12 V DC or 24 V DC power supply.



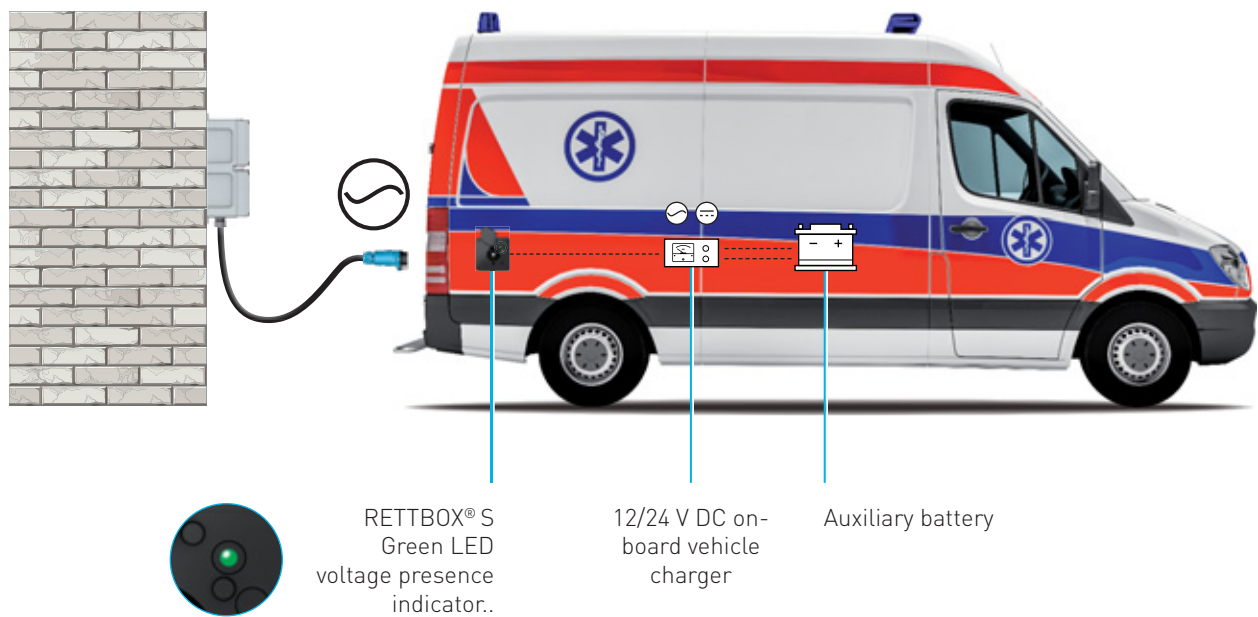
RETTBOX® S is a professional use compact and load-breaking self-ejecting socket-outlet.

The best in class industrial socket-outlet providing power to all equipment on-board a vehicle.

RETTBOX® S complies with the following standards:

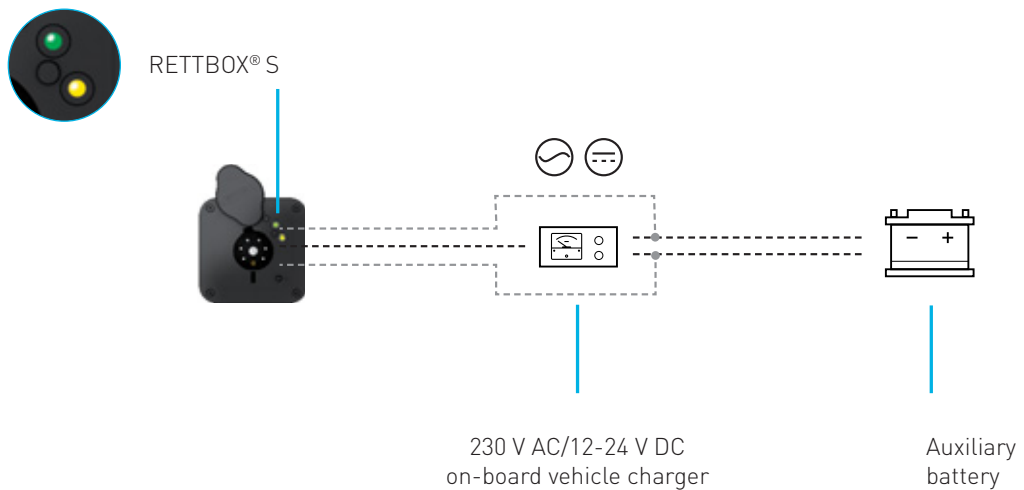
- European Low Voltage Directive and RoHS, European REACH Regulation.
- IEC/EN 61984, IEC/EN 60947-3.

**Figure 2: with an on-board vehicle charger. up to 480 V AC power supply.**



### OPTIONAL

Order a 12 V DC/24 V DC yellow LED battery charging indicator. Reference : 151ALED-24J





# 20A/32A

480 V  
U MAXI

**RETTBOX® S**

ELECTROMAGNETIC SELF-EJECTION

**NEW**

WITH OR WITHOUT AIR



IP54



1,5 - 6 mm<sup>2</sup> (1)



GRP



IK08



- 40 °C  
+ 60 °C

(1) Flexible wiring (min.-max.)



**Cable is not included**

**RETTBOX® S (20 A)**  
**RETTBOX® S AIR (20 A)\***



**BOX\***



**COUPLER SOCKET**  
straight<sup>(2)\*</sup>



angled 60°<sup>(3)</sup>

220 - 250 V AC	6P+E	With solenoid coil 12/24 V DC and male connector	1516016	1513016	15C3016
24 V DC	6P+E	With solenoid coil 12/24 V DC and male connector	1516046	1513046	15C3046
12 V DC	6P+E	With solenoid coil 12/24 V DC and male connector	1516026	1513026	15C3026

(2) Input/Cable outer Ø 5-21 mm - (3) Input/Cable outer Ø 9-18 mm, no Air version available.

\* For AIR version, change the 0 of the product reference by A.



**BOX\***



**COUPLER SOCKET**  
straight<sup>(2)\*</sup>



angled 60°<sup>(3)</sup>

380 - 480 V AC	6P+E	With solenoid coil 12/24 V DC and male connector	1536036	1533036	15C3036
----------------	------	--	---------	---------	---------

(2) Input/Cable outer Ø 5-21 mm - (3) Input/Cable outer Ø 9-18 mm, no Air version available.

\* For AIR version, change the 0 of the product reference by A.

### OTHER FEATURES

	RETTBOX® S (20 A)	RETTBOX® S (32 A)	RETTBOX® S AIR (20 A)	RETTBOX® S AIR (32 A)
Box material	GRP	GRP	GRP	GRP
Front dimensions (W x H) in mm	120 x 120	120 x 120	120 x 120	120 x 120
IP Box	IP54	IP54	IP54	IP54
IP : mobile socket-outlet without plug cap	IP2X	IP2X	IP2X	IP2X
IP : mobile socket-outlet with plug cap	IP44	IP44	IP44	IP44
Cut-out dimensions on vehicle's frame (W x H x D) in mm	86 x 82 x 83	86 x 82 x 83	86 x 82 x 83	86 x 82 x 83
Weight (excluding coupler socket)	400 g	400 g	407 g	407 g
AIR Version	/	/	up to 13 bars	up to 13 bars

### OPTIONS



Order a 12/24 V yellow LED battery charging indicator.  
Reference : 151ALED-24J.



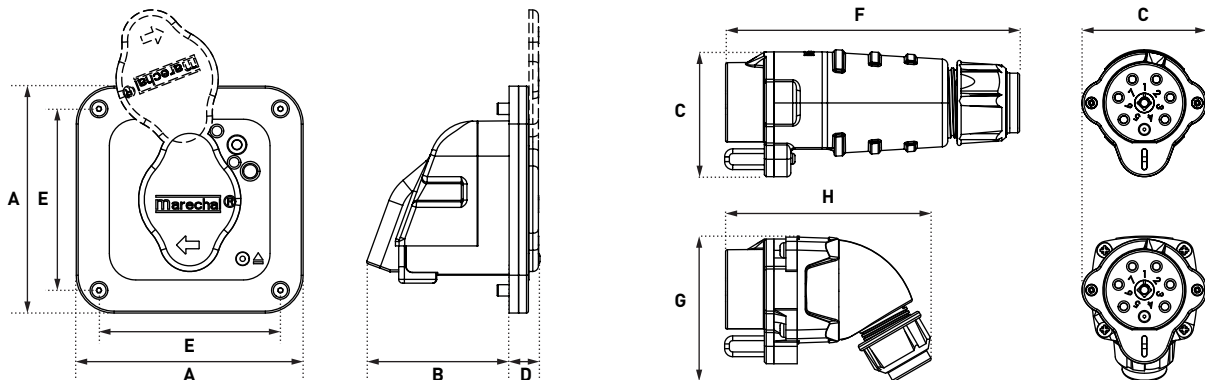
Contact us for wall installation  
with a box 120x120x91.

Cable available per meter

381AKOM : 32 A cable, 1 air duct  
+ 5G6mm<sup>2</sup> (4P+T) + 2 x 2.5mm<sup>2</sup> for auxiliaries

611AKOM: 20 A cable, 1 compressed air duct  
+ 4G2.5mm<sup>2</sup> (3P+T) + 2 x 1.5mm<sup>2</sup> for auxiliaries

## DRAWINGS AND DIMENSIONS



A	B	C	D	E	F	G	H
120	75	66	16	96	156	77	109