

9 LED CORNER WARNING LIGHTHEAD MANUAL

Wiring

To Chassis Ground:..... **BLACK**

To+VDC for Warning Mode ❶ (fuse @ 3A):..... **RED**

Default Flash Pattern - FP#1 Double [2Hz]

To+VDC for Warning Mode ❷ (fuse @ 3A):..... **WHITE**

Default Flash Pattern - FP#18 Steady Scene (Cruise Mode)

For Warning Mode ❶ Low Power Operation: **RED+WHITE**

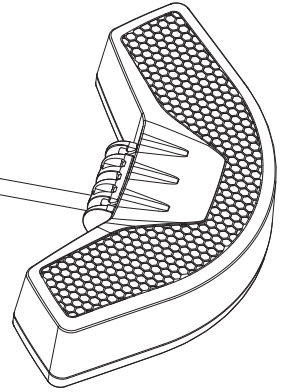
NOTE: For ECE R65 Class 1 models, low power operation is disabled by default.

For Synchronization and Flash Pattern:... **YELLOW**

Connect **YELLOW** wires of all lightheades together for synchronization.

(All lightheades should be set to the same Flash Pattern)

NOTE: When arranging lightheades to comply with ECE R65 CAT "HT" or "T", all units must be synchronized.



Operation

For Flash Pattern Selection:

Each warning mode may select and save one flash pattern. While activating a warning mode, momentarily apply **YELLOW** wire to +VDC:

- Once to the next pattern.
- Quick three times to the default flash pattern (FP#1 or FP#18).

Flash Pattern							
1	Double	[2Hz]	7	Single	[SAE/CA13]	13	Giga
2	Single	[2Hz]	8	Double	[SAE]	14	Ultra [SAE]
3	Triple	[2Hz]	9	Triple	[SAE]	15	Single-Quad
4	Quad	[2Hz]	10	Quad	[SAE]	16	Single H/L
5	Random		11	Quint	[SAE]	17	Single-Triple-Quint
6	Steady EF*		12	Mega		18	Steady Scene (Cruise Mode)

* For use with external flash controller.

For Low Power Operation / Disabling Low Power Operation:

While Warning Mode ❶ is activated, apply **WHITE** wire to +VDC for Low Power Operation.

To disable Low Power Operation, momentarily apply **YELLOW** wire to +VDC once to force High Power Operation and permanently disable Low Power Operation. Re-activate Low Power Operation by momentarily apply **YELLOW** wire to +VDC again.

NOTE: When arranging lightheades to comply with ECE R65 Class 1, disable Low Power Operation or make **RED** and **WHITE** wire in mutually exclusive switching.

For Simultaneous or Alternating Synchronization:

1. Power up the unit by applying +VDC to **RED** (or **WHITE**) and **YELLOW** wires simultaneously to enter *SETTING MODE*; the lighthead will display its current Group in short flashes:
 - Single flash = Group 1 • Double flash = Group 2
2. Remove **YELLOW** wire from +VDC then momentarily apply to +VDC again for less than 3 seconds to change to the desired Group:
 - Lightheades of the same Group will flash together.
 - Lightheades of two different Groups will flash alternately.
3. Save and exit *SETTING MODE* by disconnecting all power.

NOTE: All warning modes share the same Group setting.

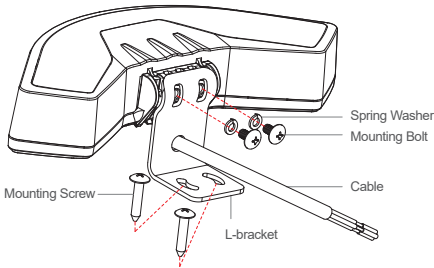
Reset Factory Default Settings:

1. Power up the unit by applying +VDC to **RED** and **YELLOW** wires simultaneously to enter *SETTING MODE*.
2. Remove **YELLOW** wire from +VDC then apply to +VDC again for more than 5 seconds. The lighthead will display fast short flashes to indicate restoring successfully.

9 LED CORNER WARNING LIGHTHEAD MANUAL

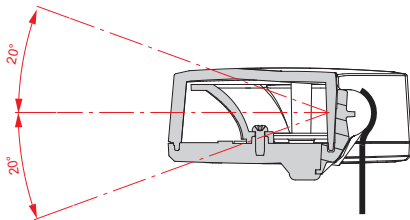
Installation

L-bracket mount



1. Locate a suitable mounting location and secure the L-bracket onto the surface with provided screws.
2. Feed the cable through the wiring hole and route it towards the control panel or switches.
3. Level the lighthouse by adjusting ± 20 degree for optimum warning effect.
4. Secure the lighthouse onto the L-bracket.
[Set driver torque value at 5.5~6.5 kgf-cm (4.77~5.64 lbf-in)]

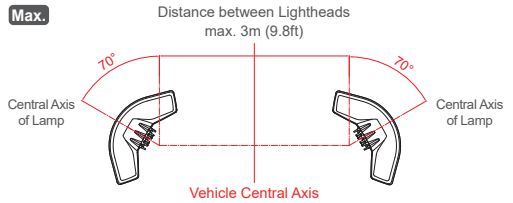
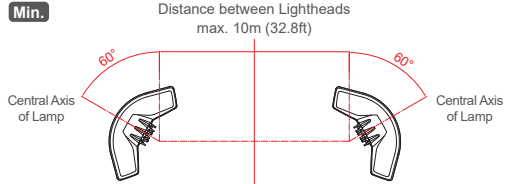
Adjustable Angle



Approved Mounting Position

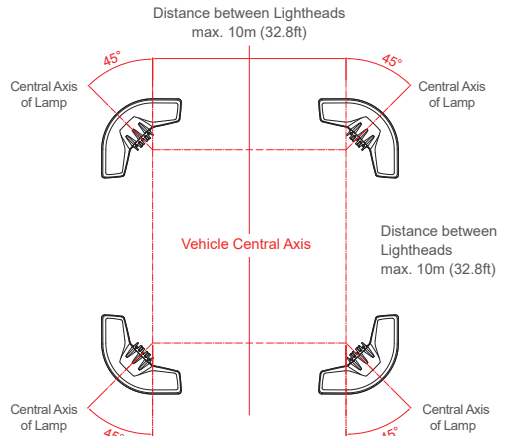
This 9-LED corner lighthouse may be set up in pair to meet ECE R65 CAT. HT or in four to meet CAT. T Follow the graphs carefully to fulfill the approval requirement.

Category 'HT' - 270° Warning Coverage (One Pair of Units at the Front or Rear of Vehicle)



NOTE: When arranging lighthoods with ECE R65 Class 1 approval, disable Low Power Operation or make **RED** and **WHITE** wire in mutually exclusive switching.

Category 'T' - 360° Warning Coverage (Four Units Mounted on the Vehicle)



NOTE: When arranging lighthoods with ECE R65 Class 1 approval, disable Low Power Operation or make **RED** and **WHITE** wire in mutually exclusive switching.



FDPARTS A/S

Midtager 26B • DK-2605 Brøndby • TLF: 69144700
WWW.FDPARTS.DK

⚠ IMPORTANT

As long as the efficiency of the special warning lamp is to be secured all around the vehicle, it is the obligation of the installer to maintain detection of the failure of a part of a special warning system on the vehicle.