

NITECORE®

R40 *v2*

1,200 Hours Max Runtime

INDUCTIVE WIRELESS CHARGING FLASHLIGHT

Specially Designed for Law Enforcement, Search & Rescue



NITECORE®

R40 v2 ((⚡))

INDUCTIVE WIRELESS CHARGING FLASHLIGHT



1,200 HOURS MAX RUNTIME ON ULTRALOW

CREE XP-L HI V3 LED | 1,000 LUMENS MAX OUTPUT

((⚡)) **INDUSTRY-LEADING** ((⚡))
WIRELESS CHARGING TECHNOLOGY

Secure the R40 V2 onto the cradle and connect the cradle to a power outlet or a cigarette lighter port to begin the charging process.



NITECORE®

R40 v2 (🔋)

INDUCTIVE WIRELESS CHARGING FLASHLIGHT

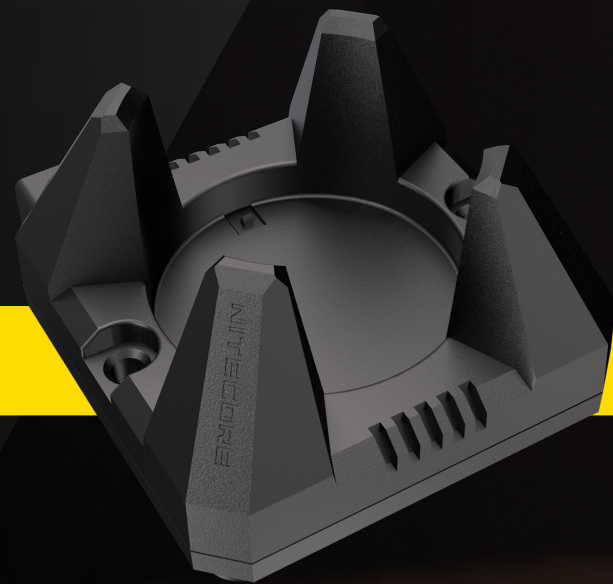
WALL MOUNT CRADLE

Provides a secure and stable contact for the charging process

NITECORE®

R40 v2 (🔋)

INDUCTIVE WIRELESS CHARGING FLASHLIGHT



DESKTOP CRADLE

Offers an easy place-and-go charging experience



NITECORE®

R40 v2 (🔋)

INDUCTIVE WIRELESS CHARGING FLASHLIGHT



CAR ADAPTER INCLUDED

Compatible with 12V/24V cigarette lighter ports in vehicles



R40 v2

INDUCTIVE WIRELESS CHARGING FLASHLIGHT



USB-C RECHARGEABLE

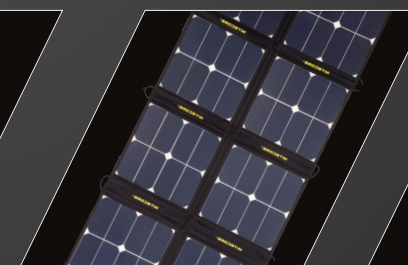
- Available with reversible plug-in
- The charging port and the rubber cover can provide outstanding water, dust and impact resistance

COMPATIBLE WITH



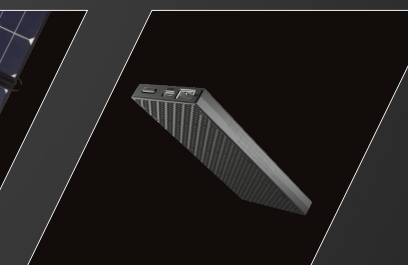
USB ADAPTERS

UA42Q



SOLAR PANELS

FSP100



POWER BANKS

NB10000



MULTIPLE CHARGING SAFEGUARDS

- Over-discharge Protection
- Overcharge Protection
- Short-circuit Protection
- Automatic Termination Upon Charging Completion

R40 v2 ((⚡))
INDUCTIVE WIRELESS CHARGING FLASHLIGHT



NITECORE NL2150DW
Available with Reversible Insertion

PROPRIETARY 21700 LI-ION BATTERY INCLUDED (5,000mAh)

Featuring long lifespan, high energy density and powerful performance, 21700 Li-ion batteries were first introduced in the electric car industry and are considered to be the future of cylindrical batteries.

USER-FRIENDLY DUAL SIDE SWITCH INTERFACE

MODE BUTTON

POWER BUTTON



NITECORE®

R40 v2 (🔋)

INDUCTIVE WIRELESS CHARGING FLASHLIGHT



(Search Mode)

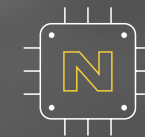
DIRECT ACCESS TO TURBO

When the light is off, long press the Mode Button to directly access TURBO (1,000 Lumens).

NITECORE®

R40 V2 (🔋)

INDUCTIVE WIRELESS CHARGING FLASHLIGHT



ATR

(Patent No. ZL201510534543.6)

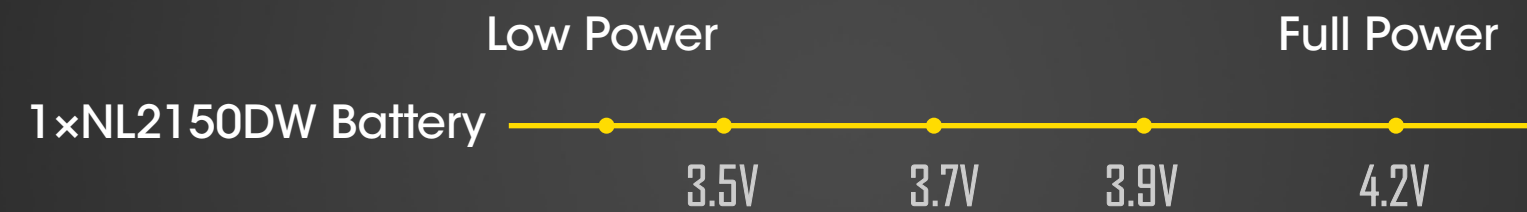
(ADVANCED TEMPERATURE REGULATION)

The integrated ATR technology regulates the output of the R40 V2 according to the working condition and ambient environment to maintain the optimal performance.

POWER INDICATION

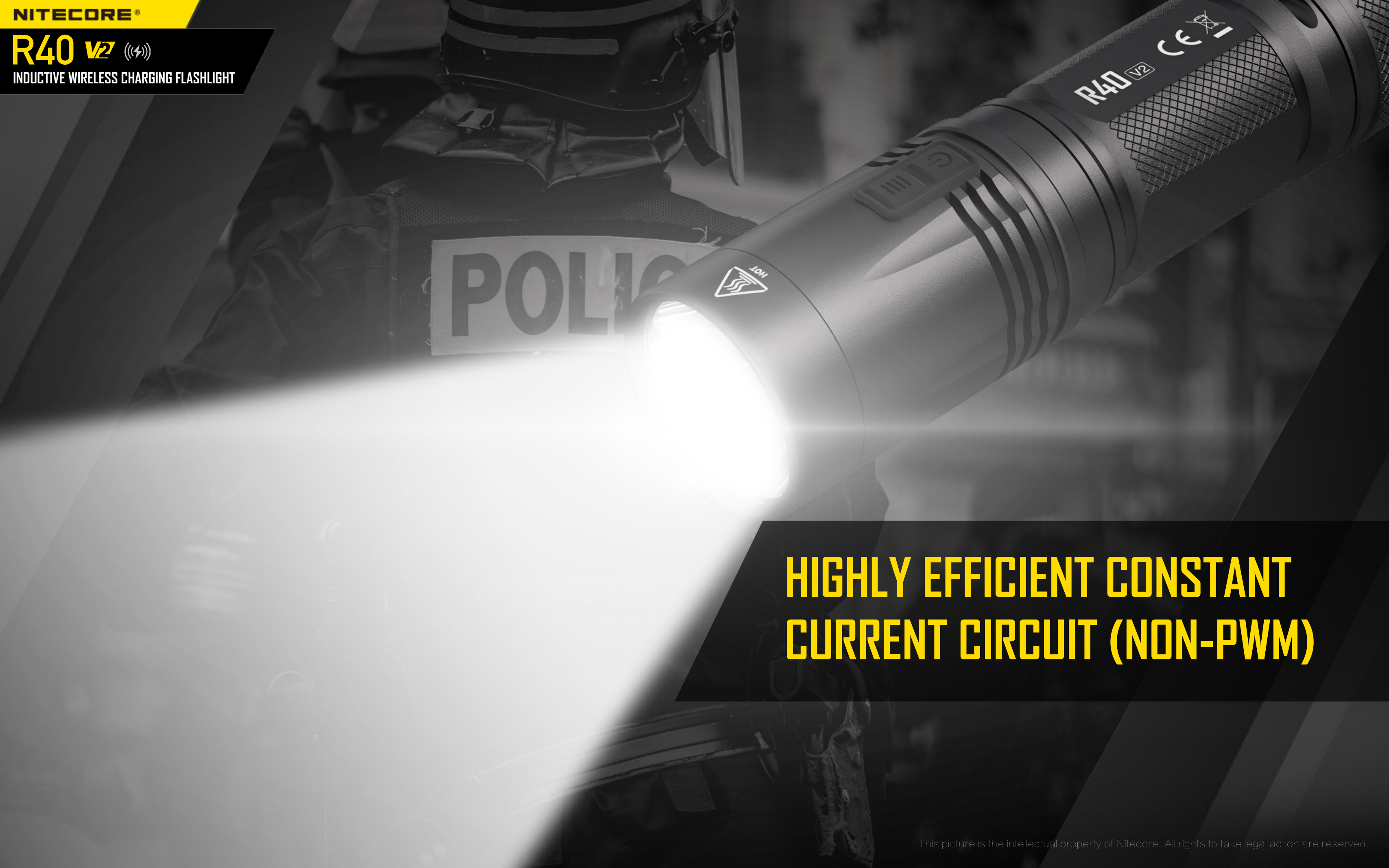
(Patent No. ZL201220057767.4)

After the battery insertion, or the Mode Button is pressed when the light is off, the power indicator beneath the side switches will flash to show the battery voltage ($\pm 0.1V$).



NITECORE®

R40 v2 (🔋)
INDUCTIVE WIRELESS CHARGING FLASHLIGHT



**HIGHLY EFFICIENT CONSTANT
CURRENT CIRCUIT (NON-PWM)**

NITECORE®

R40 v2 (🔋)

INDUCTIVE WIRELESS CHARGING FLASHLIGHT



Tail Stand Capable

EXQUISITE ERGONOMIC DESIGN



Comfortable Grip

TWO WAYS TO PREVENT ACCIDENTAL ACTIVATION



Simultaneously

When the light is on/off, press and hold both buttons until the flashlight flashes once to access Lockout Mode. In this status, both buttons are unavailable to activate the flashlight, suitable for everyday carry.

Unscrew the tail cap and remove the battery, ideal for long-term storage.



NITECORE®

R40 v2 (🔋)

INDUCTIVE WIRELESS CHARGING FLASHLIGHT

ALL-WEATHER APPLICABLE IP68 RATED

2m Submersible and Waterproof
1m Impact Resistant



R40 V2

INDUCTIVE WIRELESS CHARGING FLASHLIGHT

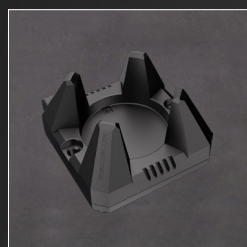
PACKING LIST



R40 V2



NL2150DW
Battery



Desktop
Cradle



Wall Mount
Cradle



Car
Adapter



AC Adapter



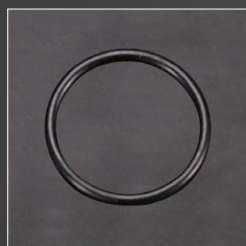
USB-C
Charging Cable



Holster



Lanyard



Spare
O-ring

Package Dimensions: 240mm x 170mm x 65mm
(9.45" x 6.69" x 2.56")

Package Weight: 650g (1.43lbs)



TECHNICAL DATA

FL1 STANDARD	TURBO	HIGH	MID	LOW	ULTRALOW	STROBE	BEACON	SOS
☀️	1,000 Lumens	420 Lumens	200 Lumens	50 Lumens	1 Lumen	1,000 Lumens	1,000 Lumens	1,000 Lumens
🕒	2h 15min	5h	11h 30min	38h	1,200h	—	—	—
📏	520m	325m	226m	101m	15m	—	—	—
🎯	67,700cd	26,500cd	12,760cd	2,500cd	60cd	—	—	—
✅	1m (Impact Resistance)							
🚿	IP68, 2m (Waterproof and Submersible)							

Note: The stated data is measured in accordance with the international flashlight testing standards ANSI/PLATO FL 1-2019, using 1 x NITECORE proprietary 21700 Li-ion battery (5,000mAh) under laboratory conditions. The data may vary in real world use due to different battery usage or environmental conditions.





FEATURES

- Utilizes a CREE XP-L HI V3 LED with a max output of 1,000 lumens
- Maximum peak beam intensity of 67,700cd and maximum throw of 520 meters
- An optical system combined with crystal coating and "Precision Digital Optics Technology" (PDOT)
- Highly efficient constant current circuit provides a stable output up to 1,200 hours
- NITECORE proprietary 21700 Li-ion battery included available with reversible insertion (NL2150DW 5,000mAh)
- Dual side switches control 5 brightness levels and 3 special modes
- Triple charging ways available
- Wall mount cradle and desktop cradle included for inductive wireless charging
- Intelligent Li-ion battery charging circuit with a USB-C port
- A power indicator beneath the side switches indicates the remaining battery power (Patent No. ZL201220057767.4)
- The power indicator can display the battery voltage ($\pm 0.1V$)
- Incorporated Advanced Temperature Regulation (ATR) module (Patent No. ZL201510534543.6)
- Optical lenses with double-sided scratch resistant coating
- Constructed from aero grade aluminum alloy
- HA III military grade hard-anodized finish
- Rating in accordance with IP68 (2 meters submersible)
- Impact resistant to 1 meter
- Tail stand capability